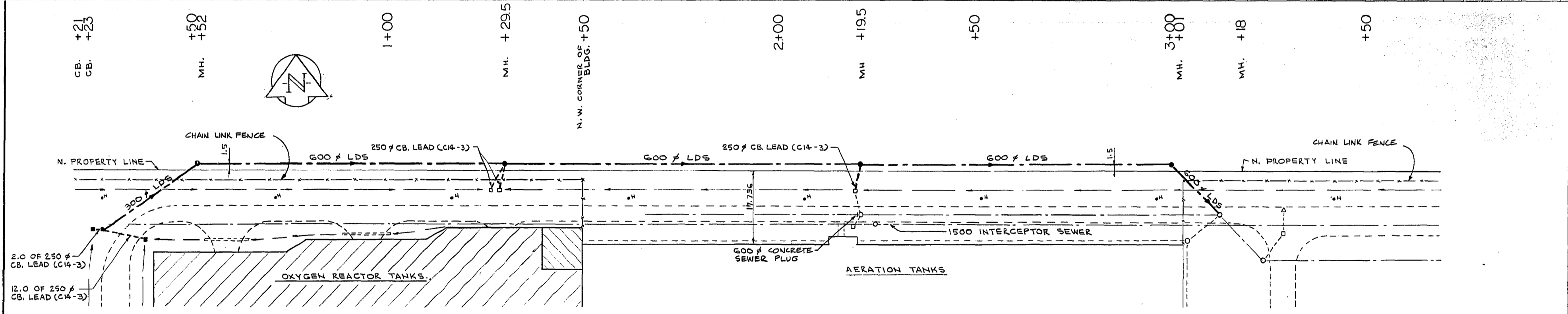
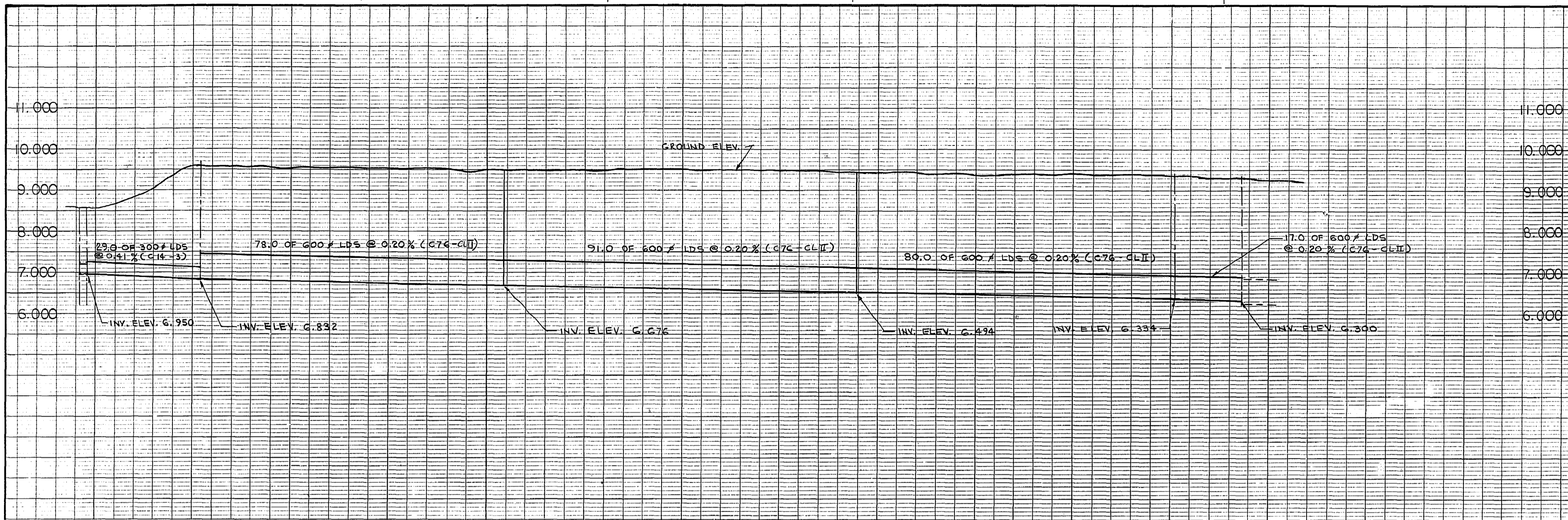


REF. OF DRAWING NO. *NEP 1049*

DETAILS *LAND DRAINAGE SEWER*



NORTH END WATER POLLUTION CONTROL CENTRE

**METRIC**

WHOLE NUMBERS INDICATE MILLIMETRES  
DECIMALIZED NUMBERS INDICATE METRES

150 mm W.M.	WATERMAIN	150 mm W.M.	HYDRO M.T.S.	150 mm W.M.	WATERMAIN	150 mm W.M.
300 mm L.D.S.	LAND DRAINAGE SEWER	300 mm L.D.S.	CONCRETE	300 mm L.D.S.	LAND DRAINAGE SEWER	300 mm L.D.S.
250 mm W.W.S.	WASTE WATER SEWER	250 mm W.W.S.	ASPHALT	250 mm W.W.S.	WASTE WATER SEWER	250 mm W.W.S.
○	MANHOLE	●	PROPERTY LINE	○	CONCRETE	○
□	CATCH BASIN	■	SURVEY BAR	□	PROFILE	□
△	CURB INLET	▲		△		△
+	JUNCTIONS	+		+		+
—	CULVERT	—		—		—
—	GAS	—		—		—
EXISTING	LEGEND-PLAN	PROPOSED	EXISTING	LEGEND-PLAN	PROPOSED	EXISTING
				LEGEND-PROFILE	PROPOSED	

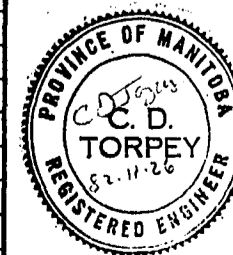
LOCATION APPROVED

UNDERGROUND STRUCTURES

SUPV. U/G STRUCTURES COMMITTEE

DATE

B.M. : BOLT ON RIM OF PRIMARY CLARIFIER NO. 3  
ELEVATION 9.784



W.L. WARDROP & ASSOCIATES LTD.  
MacLAREN ENGINEERS PLANNERS & SCIENTISTS INC.

DESIGNED BY: C.D.T. DRAWN BY: H.J.C.

CHECKED BY: *W.S.* DATE: 82-11-26

APPROVED BY: *M. Wagnat* DATE: *Dec/82*



WORKS & OPERATIONS  
DIVISION  
WATERWORKS, WASTE &  
DISPOSAL DEPARTMENT

NORTH END WATER POLLUTION CONTROL CENTRE  
SECONDARY TREATMENT EXPANSION  
OXYGEN REACTOR TANKS  
MUNICIPAL-SITE IMPROVEMENTS  
LAND DRAINAGE SEWER

RELEASED FOR CONSTRUCTION DATE: *1982-11-29*  
SCALE: 1:500 DRAWING NO. N.E.P. 1049

REVISED AS CONSTRUCTED  
DATE *JULY 1986* BY *CJA*  
CHECKED BY *C. Albani*